



**MALVINA EUROPE SARL**

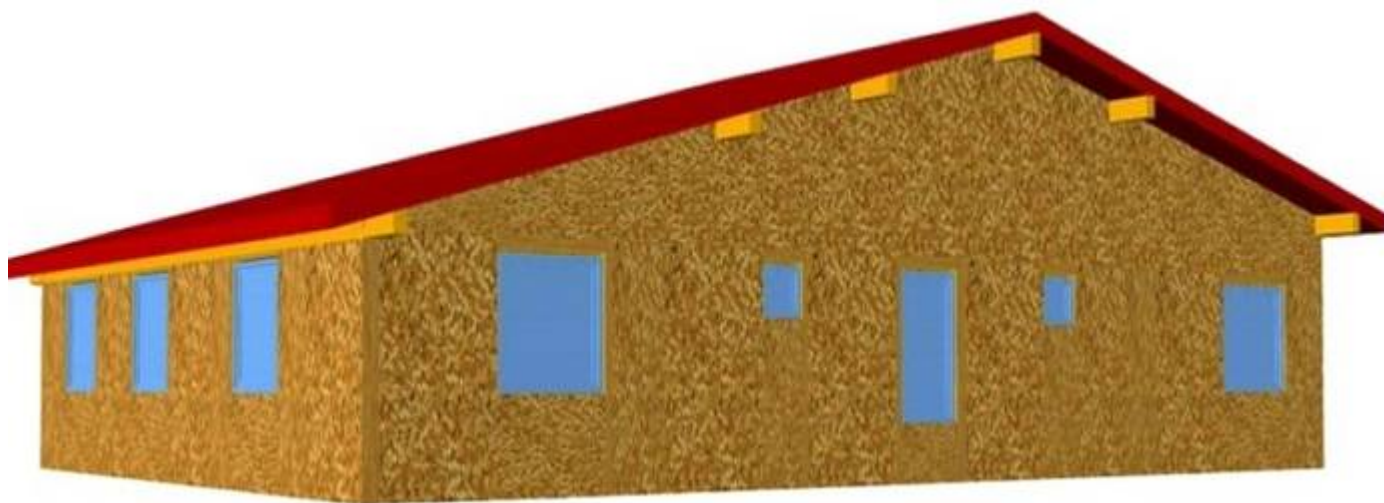
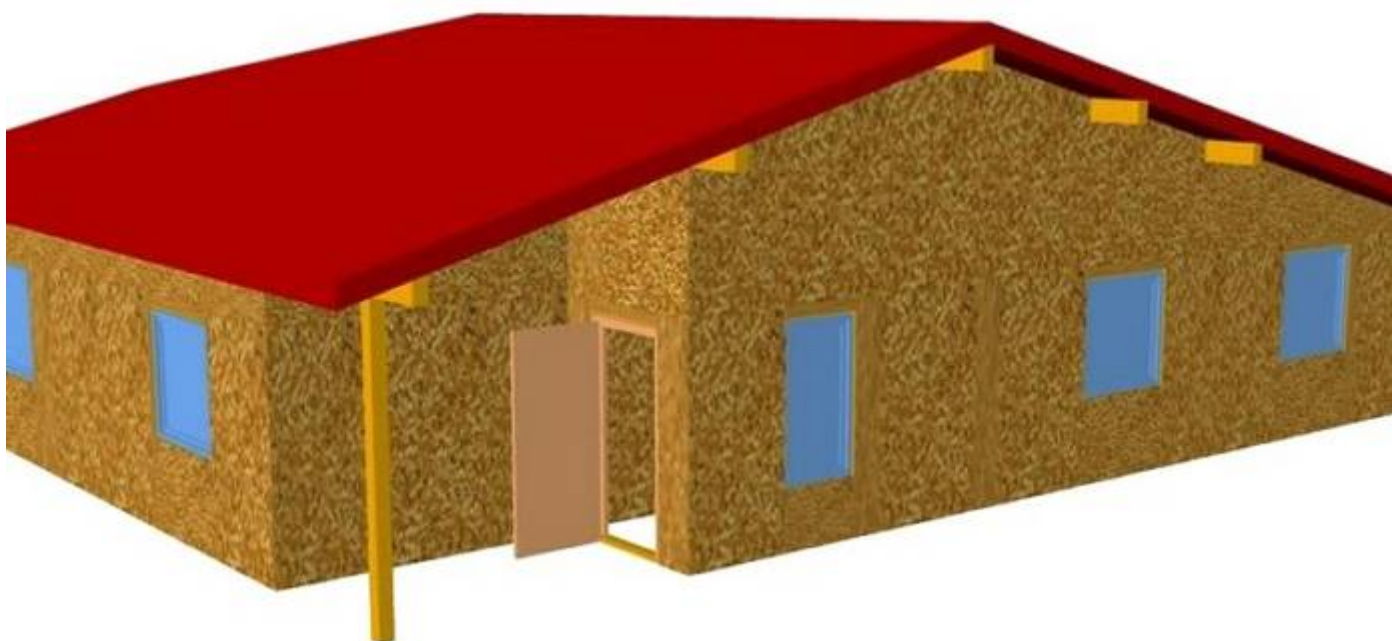
**CAPITAL VARIABLE DE 15 246 Euros • C.E. FR 784 376 783 78**

**R.C.S Saint-Gaudens 437 678 378 • SIRET 437 678 378 00013**



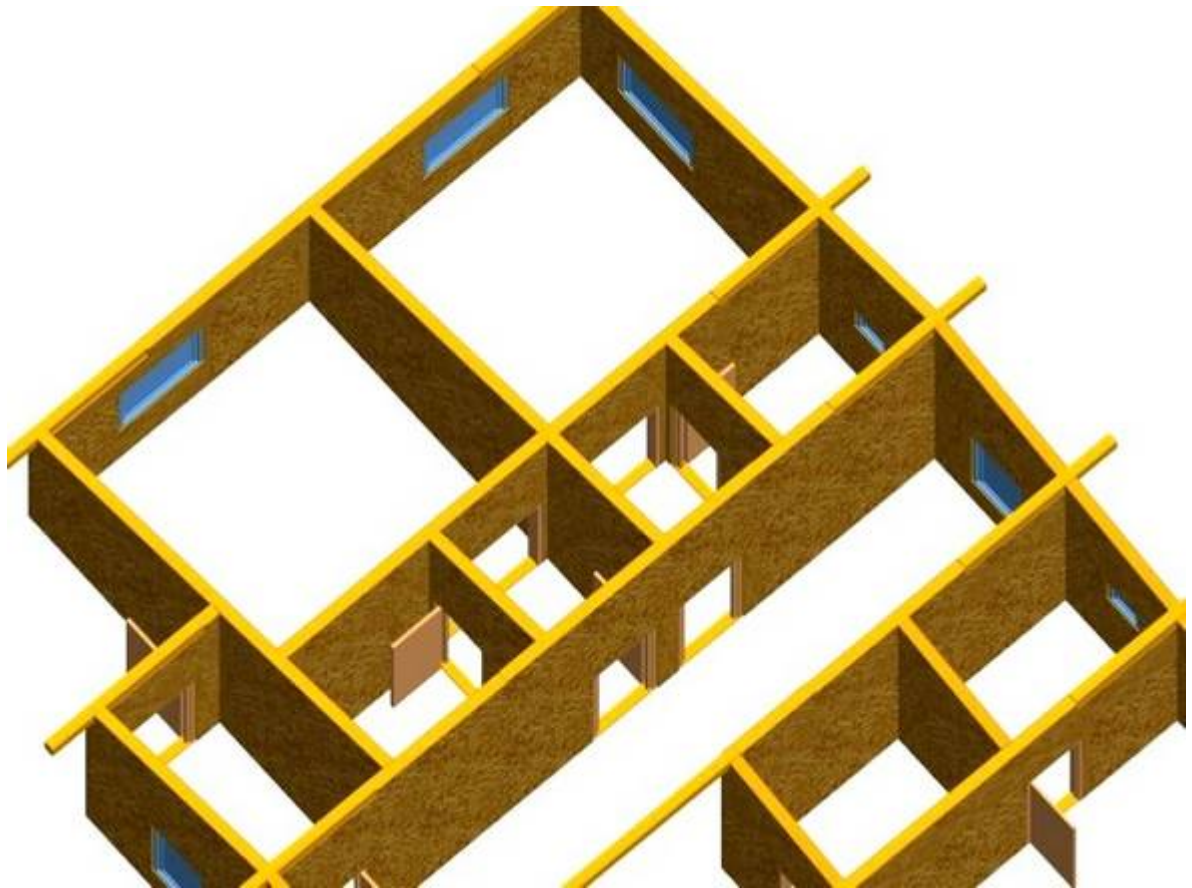
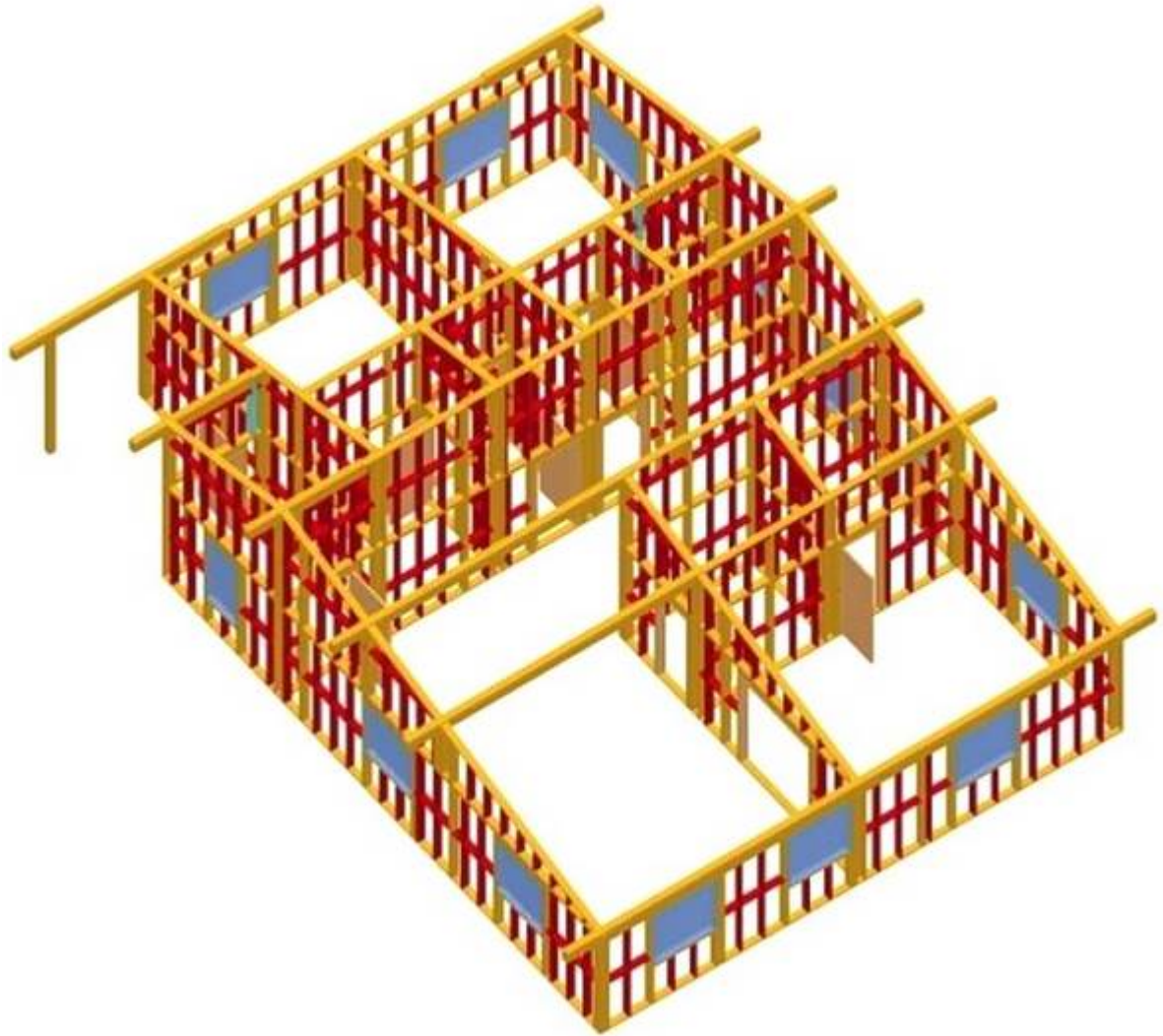
## **MAISON A OSSATURE BOIS/BUREAUX – 120,00 M<sup>2</sup>**

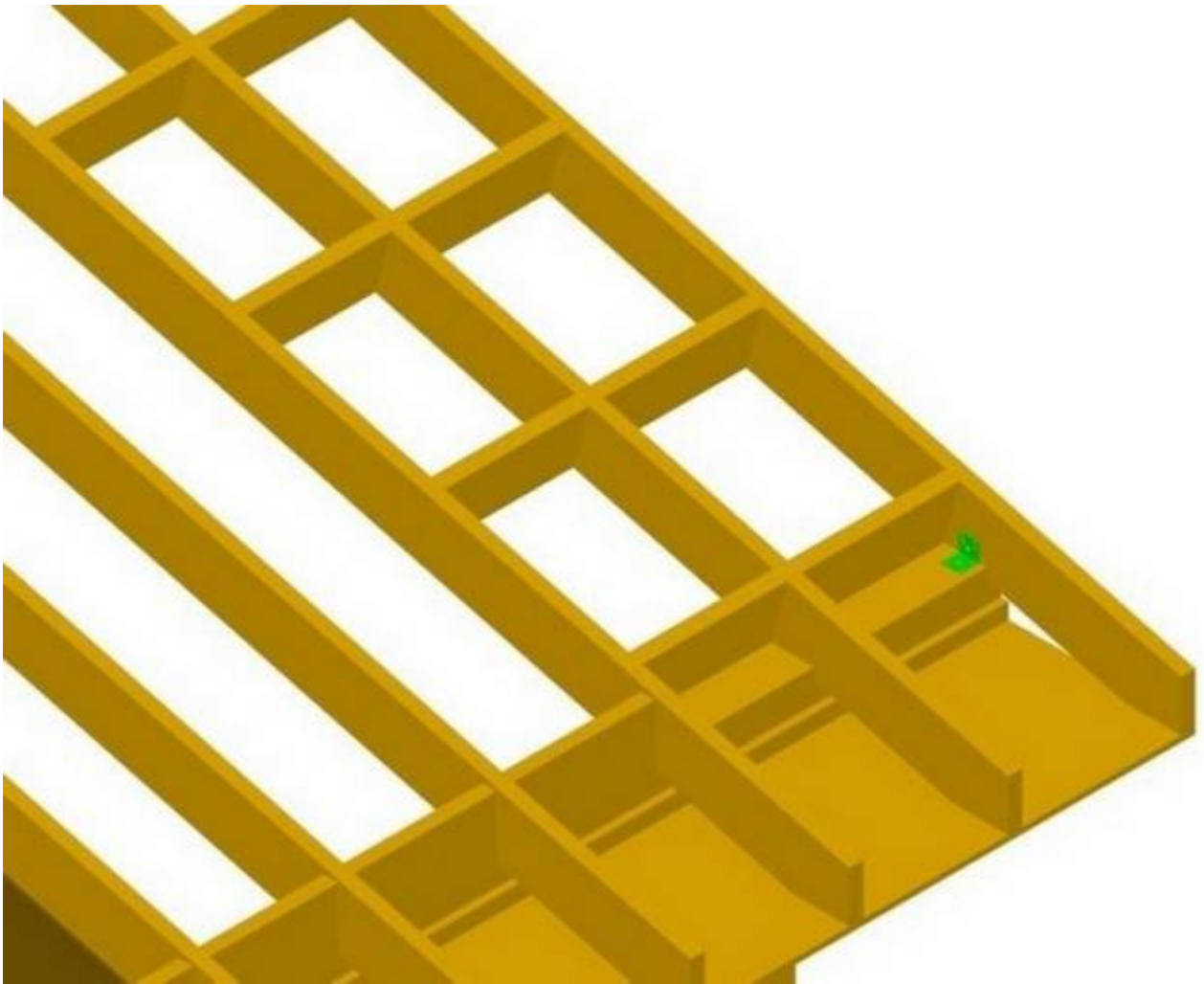
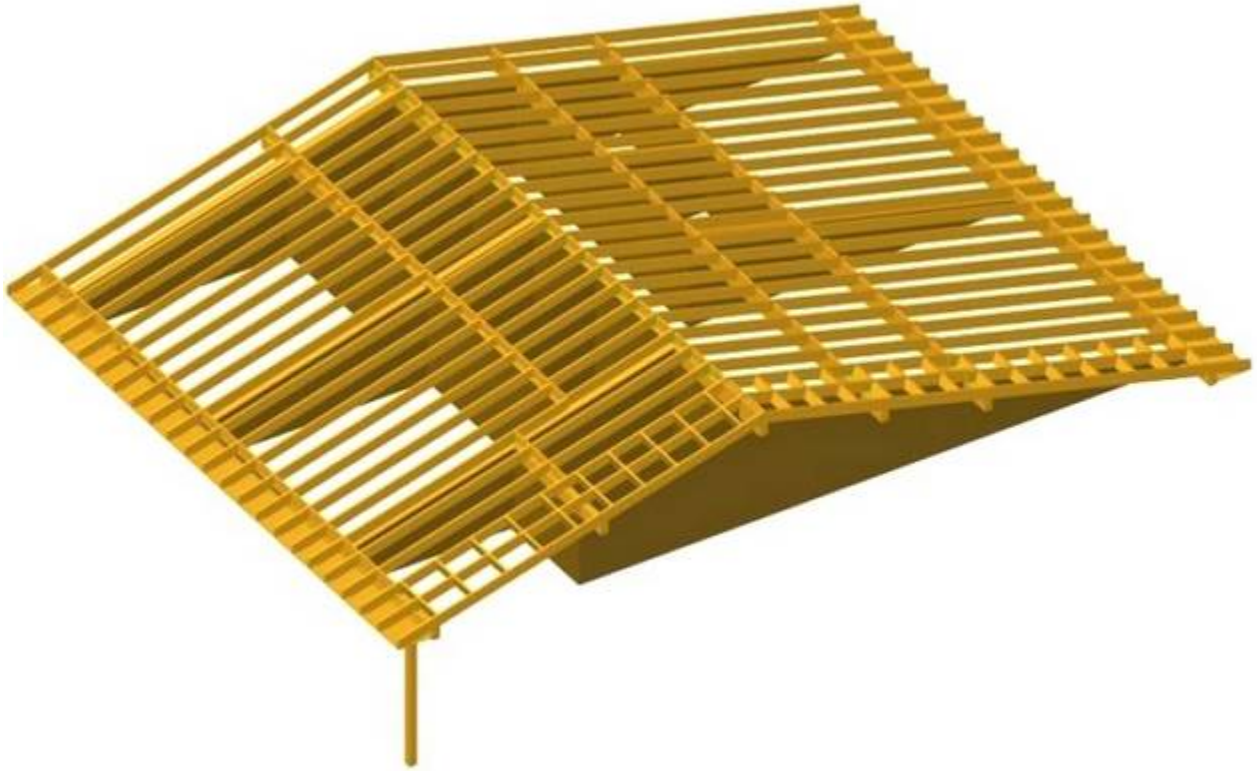
**REF : CSF – 001**

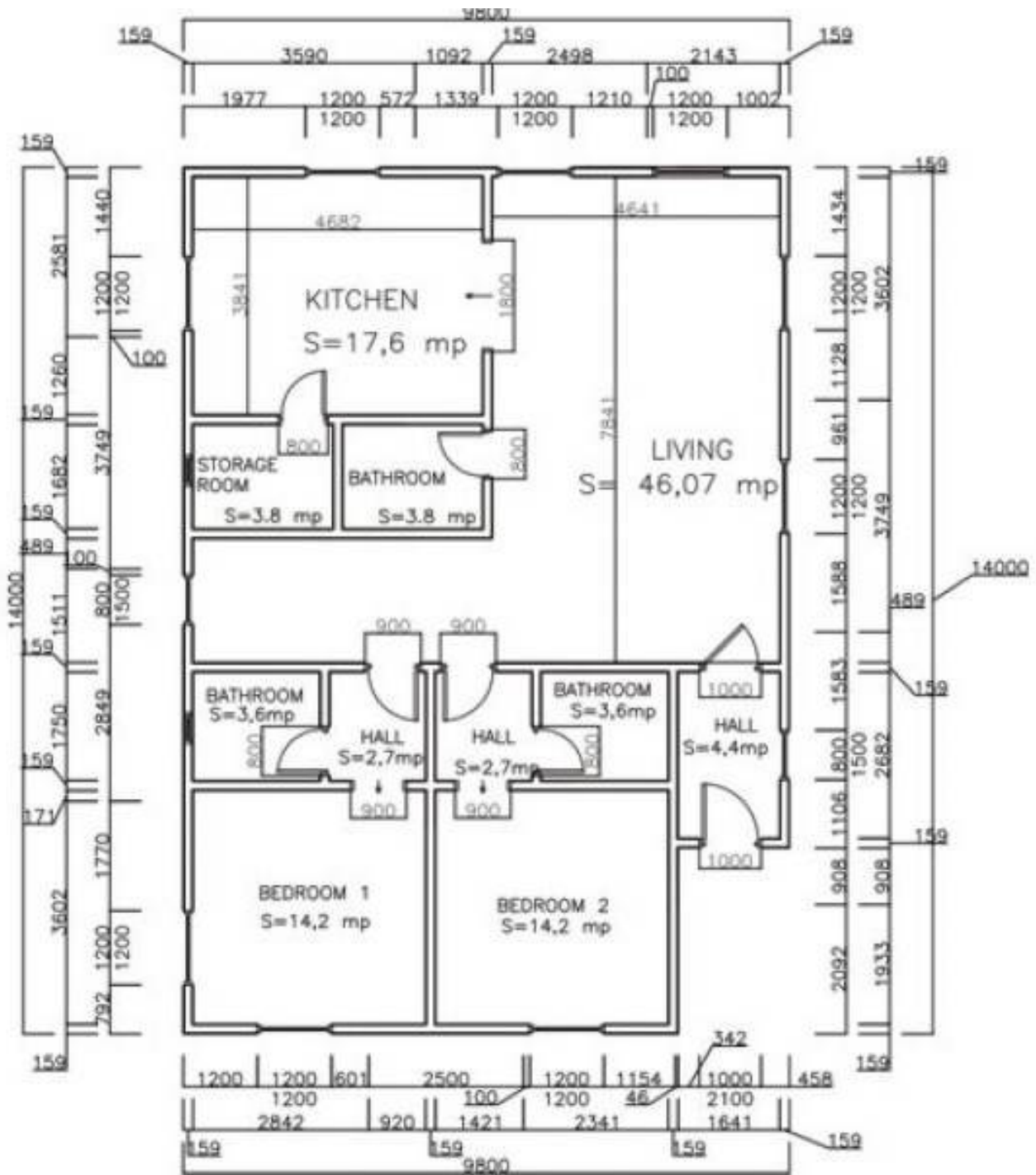


**Longueur 15 m x largeur 8 m x hauteur 3 m**









**MALVINA SYSTEMS**

